



Ultimate Survival Technologies  
UST Brands  
Jacksonville, FL 32256  
(904) 786-0033  
www.ultimatesurvival.com

## 7-Day Duro LED Lantern - Owner's Guide

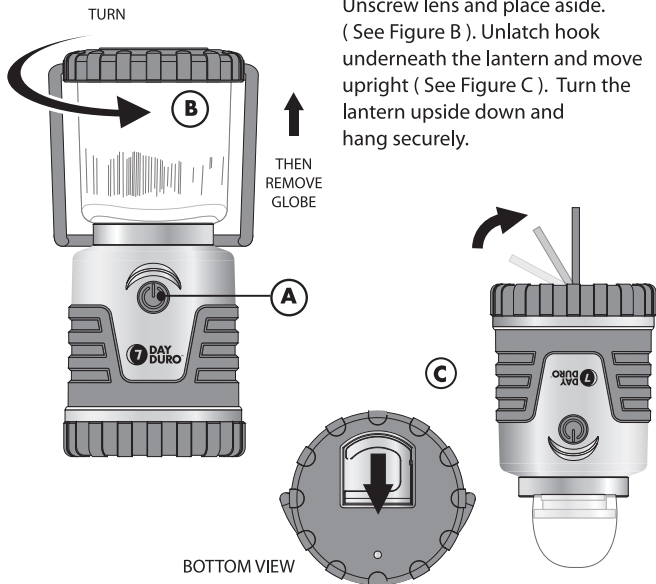
### General Operating Instructions

**POWERING ON / CHANGING MODES:** Install batteries as directed on the reverse side of this sheet. Press power button once for HIGH Mode, twice for LOW Mode, 3 times for SOS mode and 4 times for OFF. (See figure A below).

*Note: If lantern remains in any mode for more than 3 seconds, pressing the power button will turn the lantern off.*

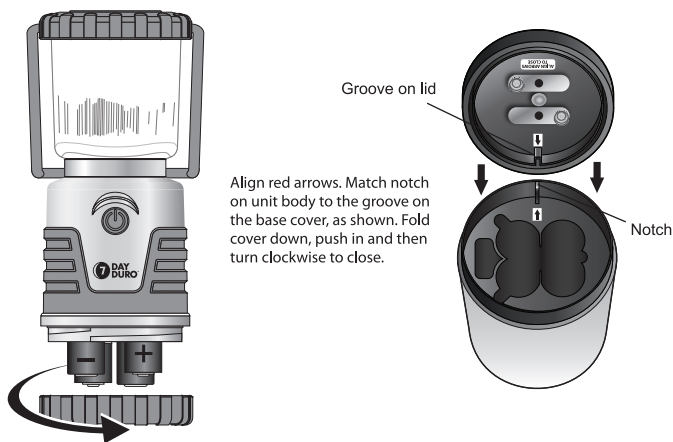
#### TO CONVERT TO A DOWNLIGHT:

Unscrew lens and place aside. ( See Figure B ). Unlatch hook underneath the lantern and move upright ( See Figure C ). Turn the lantern upside down and hang securely.



## Battery Changing Instructions

Switch off lantern. Turn base counter clockwise (unscrew) to remove. Remove old batteries and properly dispose. Replace with 4 new 1.5V AA cell batteries in correct polarity following + and - symbols in the battery compartment. Line-up arrows and notches inside unit, then push down while screwing the base to the body (see diagram below). Make sure that the base is tight in order to be water resistant. Remove batteries when not in use for a long period of time. Do not mix old and new batteries -- or rechargeable, standard and/or alkaline types.



### WARNING:

Do not look directly into the LED light for more than a few seconds. Do NOT allow children to use LED light unless under the supervision of an adult. Remove the batteries if not using the LED light for over 30 days or before storage.

**DO NOT REPLACE BULBS.** Unit contains one LED bulb, which will last the lifetime of the unit. Do not tamper with LED housing (inner globe). Permanent damage to the lantern or moisture inside the bulb may result.